

# Site Services

## Soils

- Sampling (U)
- California Bearing Ratio (CBR) (U)
- Dynamic Cone Penetrometer (DCP) (U)
- Plate Bearing (N)
- Density by Nuclear Density Meter (N)
- Density by Sand Replacement Method (U)
- Density by Core Cutter Method (N)

## Aggregates

- Sampling (U)

## Bituminous

- Laying Records (U)
- Temperatures (U)
- Sampling (U)
- Density by Coring (U)
- Density by Pavement Density Meter (U)
- Density by Nuclear Density Meter (N)
- Surface Irregularities by Rolling Straight Edge (U)
- Surface Irregularities by Transverse Straight Edge (N)
- Surface Texture Depth (U)
- Rate of Spread of Tack Coat (N)
- Rate of Spread of Chippings (N)
- Hydraulic Conductivity (N)

## Concrete (Hardened)

- Visual and Defects Survey (N)
- Crack Measurement / Monitoring (N)
- Concrete Cover to Reinforcement (N)
- Reinforcement Mapping (N)
- Half Cell Potential Survey (N)
- Rebound Hammer Survey (N)
- Pull Out Testing (N)
- Load Testing (N)
- Depth of Carbonation (N)
- Drill and Core Sampling (N)
- Reinforcement Sampling (N)
- Pundit Testing (N)

## Masonry

- Sampling by Coring (N)
- Mortar Sampling (N)

## Metal

- Drill and Core Sampling (N)
- Hardness Testing (N)
- Thickness Testing (N)

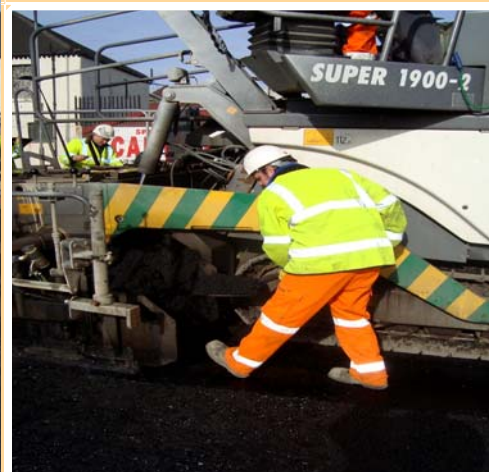
## Paint

- Sampling (N)
- Adhesion Testing (N)

## Structural Investigations

- Borescope Survey (N)
- Cavity Wall Inspections (N)
- Locating Wall Ties (N)
- Post Tensioned Bridge Inspections (N)

The Company was established in 1995 as a partnership, providing experienced personnel to undertake structural assessment, site investigation and construction materials sampling and testing work throughout the United Kingdom. It became a Limited Company in 1998 and in April 2007 a partnership was formed with MATtest Limited when the company name changed to MATtest Site Service Limited. In September 2003 the company achieved UKAS accreditation.



Key personnel have been with the company since it was established and this has been a vital component in providing the highest quality of services to our clients. Our client list comprises contractors, consulting engineers, councils, local authorities and private companies / individuals. All staff have CSCS cards and IOSH health and Safety training.



If you require information on any of the tests listed or details on our laboratory services we can be contacted on the number below, by email or via our website.

U—Denotes UKAS Accredited Test  
N—Denotes Non-UKAS Accredited Test

Edinburgh Road, Springhill, Shotts, ML7 5DT, Tel : 01501 822 244, Fax : 01501 825 044  
info@mattest.org, www.mattest.org